

The RemPipe Installation Guide



UK / Europe Office
Tel: +44 (0)8700 434040
Fax: +44 (0)8700 434045
info@omniinstruments.co.uk
www.omniinstruments.co.uk

Australia / Asia Pacific Office
Tel +61 (0)282 442 363
Fax +61 (0)294 751 278
info@omniinstruments.com.au
www.omniinstruments.com.au

USA / Canada Office
Tel +1-866-849-3441
Fax +1-866-628-8055
info@omniinstruments.net
www.omniinstruments.net

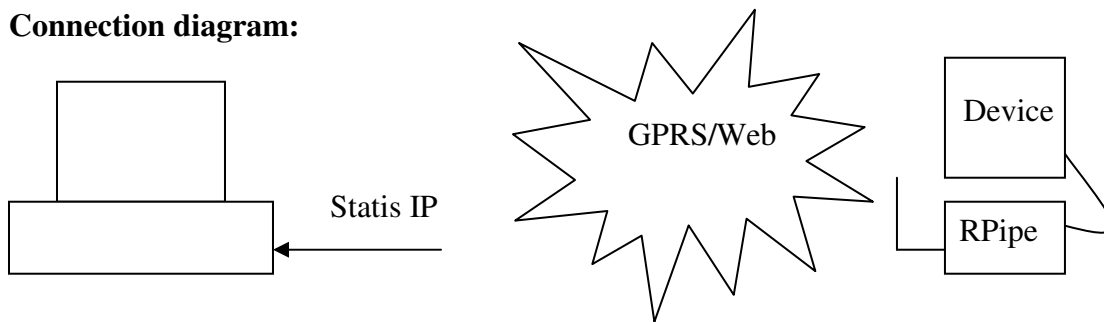
RemPipe Installation Guide

General: This document describes the installation and settings of Remmon RemPipe application software. The RemPipe is a useful tool for creating and loading virtual RS232 serial ports on your computer. It provides a user-friendly graphical interface for creating up to 99 different virtual serial COMs on your PC. It maps a TCP communication port number to each of the COMs it has created. This easy-to-use software provides you with the necessary tools to establish a connection between your computer and your device through the GPRS network, using your device software.

Note: Make sure that the appropriate TCP communication port number is unblocked.

Please follow this step by step guide for proper configurations.

Connection diagram:



Installation:

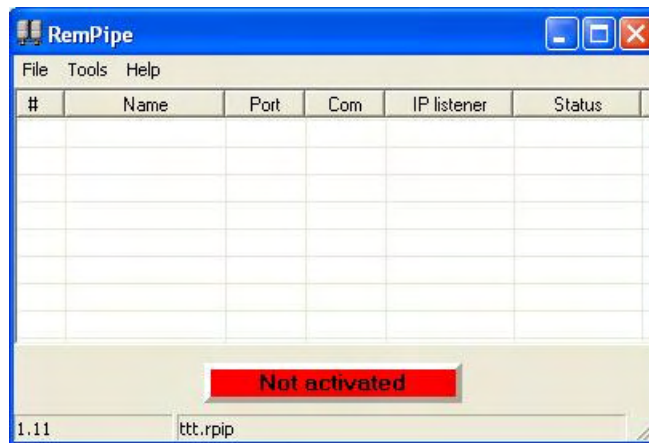
Run the setup program and follow the onscreen instructions, up to the point when you are asked to restart your computer. **Do not restart** your computer, go to the RemPipe installation directory (the default installation directory is <C:\\Program files\\Remmon Remote monitoring\\RemPipe>) and double click on "vsbsetup.exe". A black screen may appear for a second and disappears. **Restart your** computer to finish the installation.

Running the program:

Running the RemPipe program requires administrator privileges.

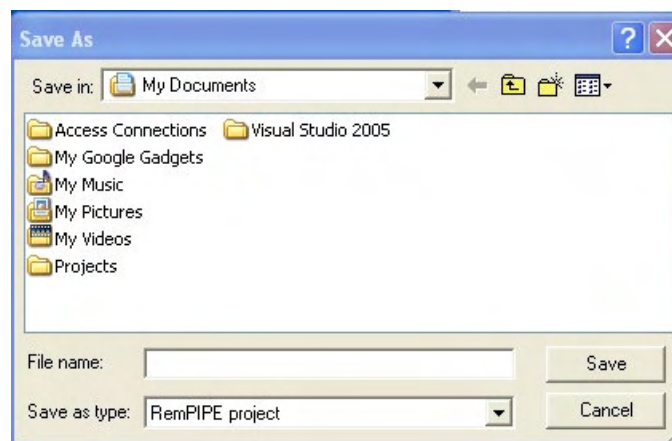
Go to the RemPipe installation directory (the default installation directory is <C:\\Program files\\Remmon Remote monitoring\\RemPipe>) and double click on the RemPipe.exe file.

The following screen appears:



Creating new project:

Go to the menu bar and click on File>>New. The following dialogue window appears:



In the *File name* textbox, type a name for your project, and click on *Save*.

Note: Saving changes to an open project can be done by clicking on File>>Save.

Setting new unit:

1. Go to the menu bar, click on *Tools>>Add unit*. The following dialogue window appears.



- In the *Name* textbox, type a name for the unit which you intend to add.
2. In the *Port* textbox, type a number to specify the communication port you intend to use for the TCP connection. Normally, you can choose numbers from 0-65535 .
3. Click on the "*Virtual Port*" down-droop-list and choose a COM number.
4. Click on *accept*.

Setting options:

1. Click on *Tools>>Options* the following dialogue box appears.



2. To load the RemPipe program when windows start check the "Load RemPipe at..." checkbox.
3. On the "Packet delay" textbox, type a number for packet frequency delay (minumum value 10 Msec).

Loading the project:

1. Make sure that no client software is running on the background.
2. To load the program on your computer click on the *"Not activated"* button, the button will turn to green, while changing its label to *Activated*. In addition, the MS windows find new hardware sound will be initiated.
3. When the RPipe is connected, the *'Not activated'* label(s), in the status column, are changed to *Activated*, and the 2 gray lights, in the # column, are changed to green.
4. The lights, in the # column, flash between red and green when data are being received and transmitted.